

ANNUAL REPORT 2021





DIRECTOR'S MESSAGE

RIISING TO THE OCCASION IN 2021

2021 was the most impactful year in FFA's 37-year history, with 118,524 people served. Thanks to the activation of our amazing community of donors, supporters, and partners – THAT'S YOU! – we were able to rise to meet the moment. Your support, coupled with our years of intentional planning to refine our storage and distribution systems, allowed us to dramatically scale up when the pandemic hit. When demand soared, we were ready!

We are stronger when we unite. FFA, therefore, is proud to have brought together committed volunteers, generous donors and socially conscious partners to create a constellation of care for our many neighbors in DC who are food-insecure.

Peter Sage, Director

WE SUPPORT

In 2021, FFA broadened the scope of its program, responding to anyone seeking assistance, and not just those who are elderly or home-bound. Given the pressures of the pandemic, we wanted to ensure that food was one less thing for people to worry about, freeing up their scant resources for other pressing expenses. We were especially happy to support the newly unemployed and those forced into quarantine.

OUR VOLUNTEERS

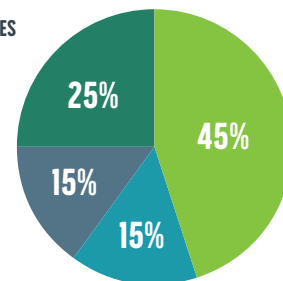
FFA has a solid team of 45 regular volunteers who are the backbone of the operation. They commit to showing up every week to take client calls, pack bags, and deliver food. FFA volunteers are welcoming of clients through the whole process, from intake to delivery. We are concerned about the people we support and keep in touch with those who are most challenged to provide an important lifeline.

WE DELIVERED

In 2021, FFA diversified its food inventory, allowing it to meet client participants' specific food needs. FFA now caters to people who are diabetic, vegetarian, vegan, and more, and to some client participants who only have a microwave for cooking food. With more donations in 2021, FFA was able to provide a greater variety of healthy food.

HERE ARE THE CONTENTS OF A TYPICAL FFA DELIVERY:

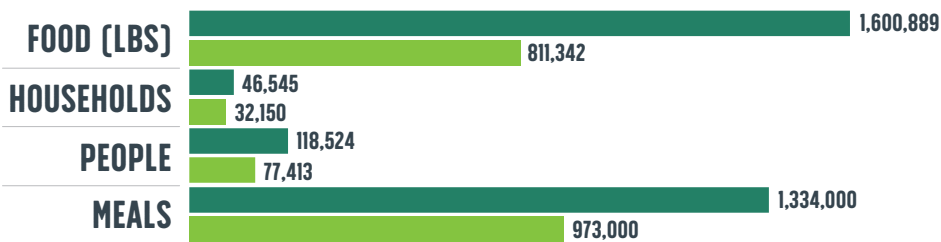
- NON-PERISHABLE GROCERIES
- MEAT
- DAIRY
- FRESH PRODUCE



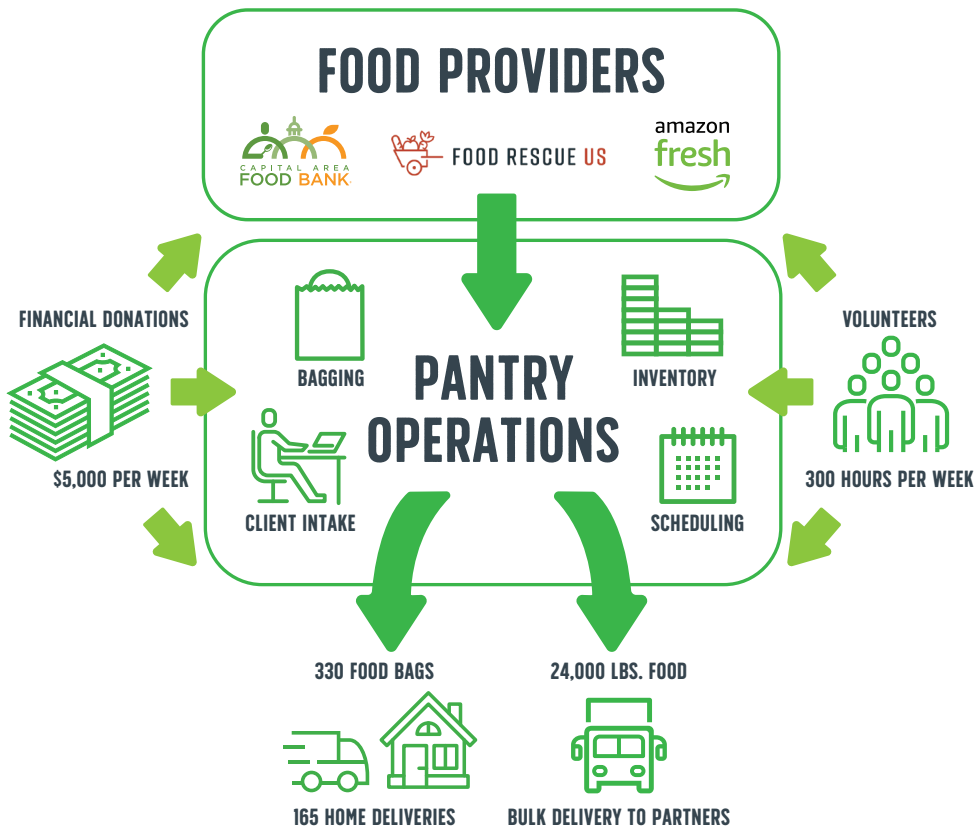


VOLUNTEERS SUPPORT EVERY STEP OF FFA'S OPERATIONS:
VOLUNTEER HOURS= 300/WEEK=
MORE THAN 15,000 HOURS IN 2021!

2021 vs 2020



A TYPICAL WEEK AT FOOD FOR ALL DC IN 2021:

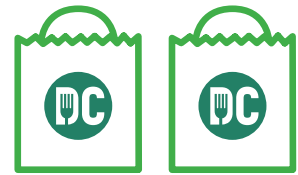


45%

OF CLIENTS ARE CHILDREN

15%

OF CLIENTS ARE SENIORS



FFA generally delivers two bags of food monthly to anyone in need. However, in cases of quarantine, or with a social worker referral, we increase the frequency up to once a week.



In Food For All we have found a reliable partner that ensures we have the healthful, varied food we need to serve over 100 households each week.

— Judith Ingram, co-founder, Feed the Family DC pantry

OUR PARTNERS

FFA has built a network of partners around the city with a common goal of helping people transition from surviving to thriving. In 2021, FFA added Father Figure and Feed the Family Food Pantry as distribution partners, and Amazon Fresh as a supply partner.

FFA also became an official referral agency for the DC Department of Health, providing emergency food to people under COVID quarantine.

FFA values the strong community partnerships that connect us to residents throughout the city. Together we are stronger!

DISTRIBUTION PARTNERS

Father Figure
Feed the Family Food Pantry
Mount Pleasant Neighbors Helping Neighbors
National Housing Trust
TUWDC (Trabajadores Unidos de Washington DC)
Universalist National Memorial Church
Ward 3 Mutual Aid
Operation Pathways
Sacred Heart Church

SUPPLY PARTNERS

Amazon Fresh
Capital Area Food Bank
Food Rescue DC

YOUR IMPACT

This year, we moved to a new database that allows us to scale up our operations and meet you where you are in your generous support of FFA's work. Every dollar you donated to FFA had a major impact right here in DC, and ensures the sustainability of our operations today and into the future. Here is the amazing growth YOU made possible this year.

FOR EVERY \$1 DONATED FFA DELIVERS \$10 OF SERVICES

This added value is possible with 1,400,899 lbs. of donated food (valued at \$2,393,493) and 15,000 hours of volunteers' time (valued at \$375,000) provided in 2021.

INCOME

Individuals*	\$121,252
Government	\$48,316
Foundations & Institutions	\$68,477
Corporations	\$18,696
TOTAL 2021	\$256,741

* FFA has a solid base of 460 committed individual donors

EXPENDITURE

Food	\$67,285
Truck Deliveries to Partners	\$58,011
Supplies	\$22,322
Pantry Operations	\$28,206
Admin	\$38,511
Fundraising	\$6,000
TOTAL 2021	\$220,335

FOOD FOR ALL DC

1810 16th Street NW / Washington DC 20009

info@foodforalldc.org / foodforalldc.org / 202.642.6660

